

Annual Report 2009



"We assist people to take charge of their own lives"

Strategic Framework

2009–2030

Mission

UnitingCare Harrison assists people to take charge of their own lives.

Values

UnitingCare Harrison's work is inspired by its Christian foundations and the *Statement of Purpose* of UnitingCare Victoria and Tasmania.

Hope UnitingCare Harrison believes people have the capacity for positive change.

Excellence UnitingCare Harrison is a responsible steward of all its resources striving for the best in everything it does.

Compassion UnitingCare Harrison listens and works together with people to find solutions, having particular concern and empathy for those who are vulnerable, poor and marginalised.

Integrity UnitingCare Harrison acts ethically at all times.

Equity UnitingCare Harrison stands for justice and a fair go for all people regardless of their background, ability or circumstances.

Independence UnitingCare Harrison fosters self-reliance.

Vision

UnitingCare Harrison will be an influential leader in the provision of quality housing and community services.

Strategic Plan

Infrastructure

UnitingCare Harrison will ensure that its infrastructure adequately supports its operational needs.

Strategic Positioning

UnitingCare Harrison will ensure that its reputation as a leading provider of housing and community services is well known by stakeholders and the community.

UnitingCare Harrison will use its influential voice to promote the issues of people in need.

High Quality Client Services

UnitingCare Harrison will strive for excellence in the delivery of client services.

Housing

UnitingCare Harrison will pursue growth in affordable and social housing through property development and provide specialist expertise to the wider church in the area of property regeneration.

Key Relationships

UnitingCare Harrison will build on our relationships with the wider church, other service providers, government, corporate bodies, philanthropic organisations and private donors.

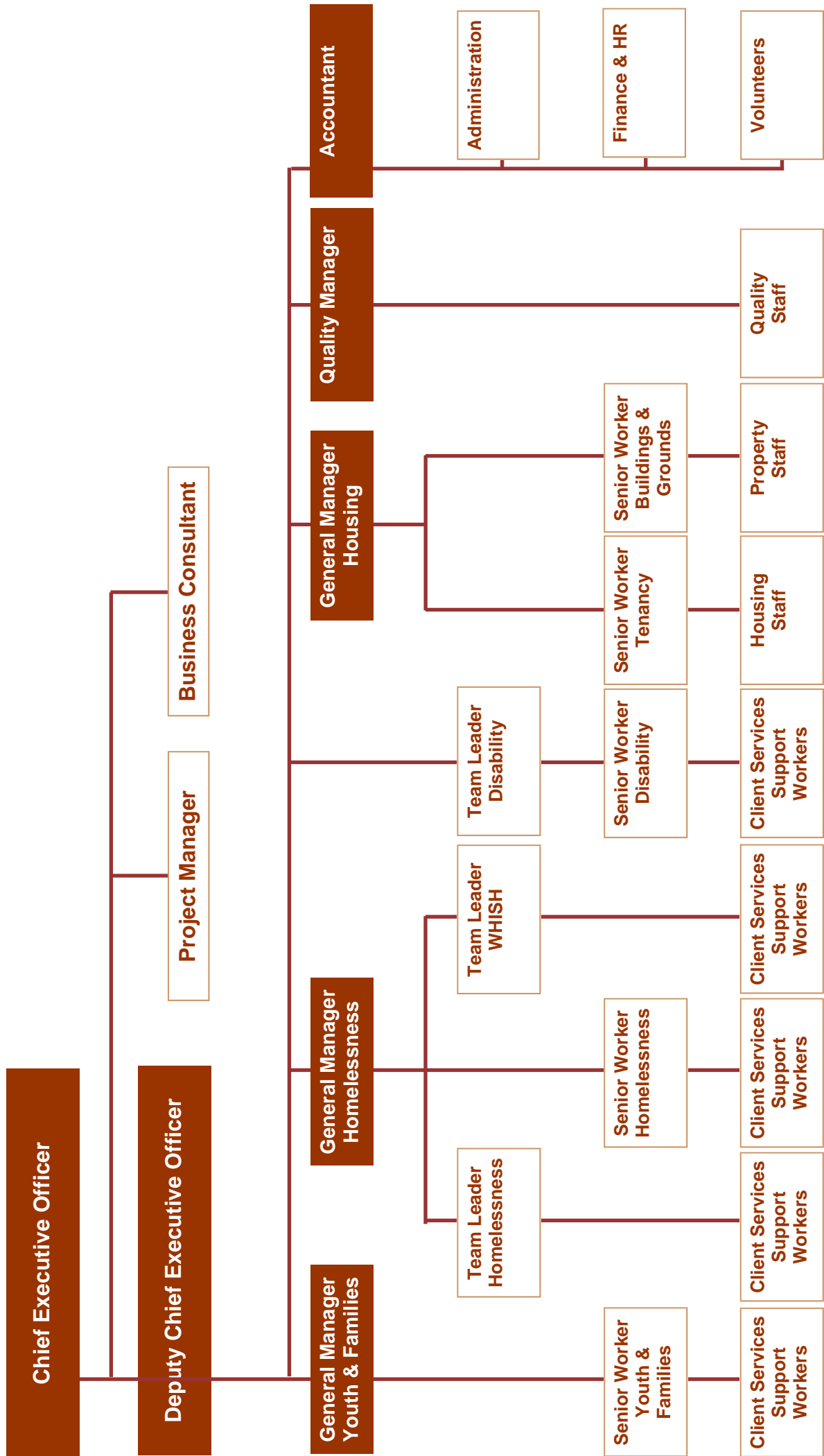
Contents

| | |
|------------------------|----|
| Agency Structure | 4 |
| Board of Governance | 5 |
| Chairperson's Report | 6 |
| Treasurer's Report | 7 |
| CEO Report | 8 |
| Deputy CEO Report | 9 |
| Homelessness | 10 |
| Disability | 11 |
| Youth and Families | 12 |
| Housing | 13 |
| Our Volunteers | 14 |
| Years of Volunteering | 15 |
| Continuous Improvement | 16 |
| Supporters | 17 |
| Balance Sheet | 18 |
| Donations | 19 |





Agency Structure



Board of Governance



Aidan Wright



Alex McWilliams



Bator Martonyi



David Baxter



James Downing



John Allen



Pam Young



Marika Hubble-
Marriot



Ron Townsend



Roger Gough



Stephanie Webber
(By invitation)

Chairperson's Report



'Building On The Rock'

As I was writing this report, the following line from a song kept jangling around in my head: 'Build your house on a strong foundation and happy days will follow you.' I have no idea what the song is called or who wrote it! Well of course, one thing led to another and soon not only was the song bouncing around my head but these lines from Chapter 7 of Matthew's Gospel:

²⁴"Therefore everyone who hears these words of mine and puts them into practice is like a wise man who built his house on the rock. ²⁵The rain came down, the streams rose, and the winds blew and beat against that house; yet it did not fall, because it had its foundation on the rock. ²⁶But everyone who hears these words of mine and does not put them into practice is like a foolish man who built his house on sand. ²⁷The rain came down, the streams rose, and the winds blew and beat against that house, and it fell with a great crash."

UnitingCare Harrison is building on the ROCK! - BIG TIME!

As Chairperson of the Board I am overjoyed to tell you that Harrison has grown amazingly during the year ended June 2009. Peruse the information in this Annual Report and you will see that Harrison has grown in size and in 'dividends of care' for our many stakeholders.

Harrison is building on the rock of helping others. We are building on the rock of compassion. We are building on the rock of care. We are building on a sure foundation in welfare. And we are building housing.

We have embarked on an amazingly inspirational development in the life of Harrison. In terms of our

analogy, Harrison's building program will mean that those previously forced to 'build on sand' will now be able to live in houses with solid foundations. The Harrison Housing program has occupied much of the Board's time over the last year. It has been challenging at times but also very exciting.

It is a great Board to work on and I thank all members for their hard work over the year. I offer our very best wishes to Board member, Alex McWilliams, who tragically lost his wife during the year and then had a very bad accident himself. Our thoughts and prayers go with him.

Now into another year and who knows what lies ahead!? However, one thing seems certain. There will be some very large buildings built on some very solid foundations and in that way this arm of the church of Jesus Christ, UnitingCare Harrison, will be like the person. '*who hears these words of mine and puts them into practice (is) like a wise man who built his house on the rock.*'

I thank the Board for their confidence in and support of me as their Chairperson and keenly anticipate the exciting developments of next year.

A handwritten signature in black ink, reading 'Rev Ron Townsend'.

Rev Ron Townsend
Chairperson

Treasurer's Report



| | 2009 | 2008 |
|---|-----------------|----------------|
| Surplus (loss) on operating activities | (147,760) | (314,996) |
| Surplus (loss) on non-operating activities | 220,631 | 316,256 |
| Total Surplus (loss) from all activities | \$72,871 | \$1,260 |

The financial reports for UnitingCare Harrison for the year ended 30th June 2009 are detailed in the table above.

From this information, it is noted that gross income from operating activities recorded a 3.5% increase of \$171,217, while total expenses have increased by 1.6% or \$81,729. Non-operating activities on the other hand have recorded a net 30.2% decrease of \$95,625.

The results recorded in the chart above continues to show the trend that the core activities of Harrison are required to be significantly supported by its non-core activities to ensure ongoing programs are satisfactorily maintained. This is also demonstrated by the fact that the various programs maintained by the agency continue to record relatively predicible results with one half of all programs ending in a surplus for the year while the other half ended in a loss.

Interest received from bank deposits amounted to \$184,664, (\$172,824 for 2008) and net revenue from opportunity shops amounting to \$40,726 (\$67,422 for 2008). These together with gifts and donations of \$24,383 (\$35,264 for 2008) from individuals and philanthropic trusts continue to provide invaluable assistance to the agency.

Harrison is in the fortunate position of having such a contribution from its non-core activities and when combined with its continued involvement in Housing and Independent Living Units, it is well placed to ensure sufficient funding is available to satisfactorily maintain its ongoing programs.

A handwritten signature in black ink, appearing to read 'Bator Martonyi'.

Bator Martonyi
Treasurer

CEO Report



‘Working with Church communities, to develop affordable housing’

Homelessness is the ultimate tragedy for families, single people and adolescents. Permanent affordable housing is the only way to stabilise families so that children can attend school, parents can find and keep jobs and they can become part of a community. There are approximately 100,000 people who are homeless in this affluent country every night. How can we help these people as a Uniting Church agency?

At UnitingCare Harrison we have a plan; it is not an immediate answer to the people lining up in our reception area every day but a longer term plan to develop hundreds of housing options funded by our Church. We intend to build a variety of housing options on prime Church land. Some will attract higher rental income and this income will be used for the wider mission of the Church and a significant proportion will be directed to social and affordable housing projects. The Uniting Church, the Board and the management of this agency is determined to use its resources to assist disadvantaged people to find new hope.

Earlier this year I travelled to England and Holland to see the “Apartments for Life” style of housing. I travelled with our architects, a Harrison board member and a community development consultant. We visited a number of projects in England and learned what to do and more importantly what not to do. In Holland we met with Hans Becker, the guru of the “Apartments for Life” concept; this was a real eye opener and changed our thoughts and plans for our Ivanhoe project. Hans always asks the question “would you live in this place, if not what would you change to make it your place?” This project will now incorporate a large community centre, community gardens and include a men’s shed. Approximately 30% of the units will be set aside for

affordable housing while the rest will be placed on the market with the occupancy rights sold at 25% below the market price. This project has a commercial area providing retail and office space. We hope to commence building this project in 2010 – 2011.

The Deputy CEO is now responsible for the day to day management of both the agency’s welfare services and housing services. My role is to concentrate on working with the Synod and Presbyteries and to consult with Uniting Church congregations in order to regenerate church properties. This regeneration includes strengthening communities e.g. community centres, community gardens and the development of affordable housing. This must be the best job in the world! I am truly privileged to work alongside and have the trust and support of so many Uniting Church people.

I take this opportunity to thank the Board of Governance for their support and guidance, the management team, volunteers and staff of Harrison for their hard work throughout the year.

Thank you one and all for your continuing commitment and support.

A handwritten signature in black ink, appearing to read 'Roger Gough'.

Roger Gough
Chief Executive Officer

Deputy CEO Report



‘Positive change to build a stronger organisation’

The past twelve months have been months of change – change in agency name, change in structure, change in staff, change in programs. The change has been positive and resulted in a more professional approach to the work we do.

The agency has diversified into building affordable housing, managing independent living units and social housing and our name now reflects this diversity.

Our programs have been allocated into four streams – Homelessness, Disability, Youth and Families and Housing. Each stream has a General Manager supported by team leaders, senior workers and trainee senior workers. We have expanded our Administration team and also created a small team of staff led by our Chief Executive Officer which is focused on project development.

This year three programs have closed due to the end of government funding - Genesis Day Program, Job Placement Employment Training (JPET) and Stronger Families. The closure of our Genesis Day Program was a sad day indeed as we said goodbye to 13 participants some of whom had been in the program from its inception, over 16 years ago. Unfortunately the closure of JPET made the continued operation of our Box Hill Office nonviable and we transferred remaining programs to our Knox office.

Although Stronger Families funding ceased in June this year the program has been proven to prevent young people experiencing adverse outcomes including homelessness, due to family break down. Therefore Harrison will continue to run the Stronger Families program; financing it from donations and income from our five opportunity shops.

As a Front Door, had over 1100 singles and families accessing our services in the past twelve months; a 300 per cent increase on last year. I do not see this situation changing as rents have continued to increase and housing is still in short supply. So in the coming year we plan to increase the agency’s social and affordable housing stock.

Thank you to our team of volunteers; without whom we would not be able to respond to the many needs of our clients.

I thank the staff of Harrison for their dedication to the task. Harrison has a strong reputation for being flexible in responding to client needs and staff are willing to go that bit further for a positive outcome. Although it is a rewarding job it is also very draining especially when resources are so lacking. It is hoped that in the coming year we will increase these resources through our project development. I look forward to this challenge.

A handwritten signature in black ink that reads "S. Webber".

Stephanie Webber
Deputy Chief Executive Officer

Homelessness



‘Assisting people who are homeless, or at risk of becoming homeless to find secure, safe and affordable accommodation’

This year has seen continued decline in affordable housing options in both the private and community sectors. Families and individuals are facing the stress of having to compete for the limited stock of rental properties as well as having to spend a bigger slice of their weekly income on their housing budget.

People presenting at our door requiring crisis accommodation has increased by 590% over the last three years. While we offer people safe and secure short term options, we aim to stem this increased front door traffic by offering housing support in the way of tenancy advocacy.

This support assists people to resolve issues that may be detrimental to their current tenancy (rental arrears, property repairs, nuisance behaviour) and aid others to secure long term tenancies (sourcing available housing, references, bonds, moving costs), enabling people to take charge of their own lives.

Our Homelessness Team seek to offer positive housing outcomes with the very limited resources available. The generous support of individuals, organisations and corporate supporters enables us to offer toiletry kits, emergency food and accommodation to people in crisis. Donations can be made using our donation slip on page 19.



Crawford Court, South Melbourne

A handwritten signature in black ink that reads "Mark Dixon".

Mark Dixon
General Manager Homelessness

Disability



‘Continuing to make a positive difference in the lives of people with a disability’

Another year has passed and many achievements have been accomplished. Client intake has continued to grow along with clients successfully completing the 20 week Individual Development Program. As with any journey come challenges and staff have excelled in the area of enabling clients to take charge of their own lives through decision making and experiential learning.

Resilience, dedication and commitment to excellence are qualities that have led the Disability Team to achieving this year’s accomplishments. Special acknowledgement goes to Disability Support Worker Suzanne Lewis. Suzanne has illustrated that working with a *can do attitude* can overcome fear and enable clients to make their own decisions, along with taking responsibility for consequences that may follow as a result. Due to Suzanne’s commitment with one particular client, the client has been able to explore one self and commence thinking and feeling that they can actually *take charge of their own life*. Suzanne’s accomplishments have been noted and recognized by her work peers and compliments received from clients and families. As a result, Suzanne has been nominated in this year’s Victorian Disability Support Worker Awards.

The year to follow will see Disability Services continually evolve in line with the Quality Framework for Disability Services in Victoria. This will see our team fully implement a person centred foundation to service delivery.



Gifford Arts Program

A handwritten signature in black ink, appearing to read 'G. New'.

Glen New
Team Leader Disability Services

Youth & Families



‘Working collaboratively with young people and families to strengthen relationships’

The work of our energetic Youth and Families Team has directly assisted 498 young people this year. Our work is focused on maintaining the family and we have developed specific programs to assist young people and their families during the often bumpy journey through adolescence.

Stronger Families in Our Community – developing strategies that minimise family conflict and encourage young people to remain within the family unit

Effective Parenting – assisting parents to support their young person’s journey through adolescence

Adolescent Support – specialist case management services for young people experiencing difficulties with home life and school or at risk of homelessness

Finding Solutions – addressing conflict between young people and their families

Creating Connections – delivering life and living skills and links to education and employment

Youth Supported Accommodation Assistance Program - providing assistance to young people who are homeless or at risk of homelessness

Our vision is to build stronger families that in themselves will build stronger communities.



Jenny Tomlin
General Manager Youth and Families



Youth Celebration Day

Housing



‘Committed to the development of sustainable housing for people on low incomes’

Following the launch of our Sustainable Living Project last year, we have been busy rolling out the first stage in our Independent Living Unit (ILU) communities at Wandin North, Moorabbin, Prahran, and South Melbourne.

Residents of these communities have taken part in project briefings and begun thinking about sustainability issues that are relevant for them, their homes and their communities.

Saving water and electricity, reducing emissions, waste and landfill are just some of the areas being focused on.

Each community is developing its own Action Plan to tackle sustainability issues safely. Sustainability lessons and tips from each facility will be shared with the other fifteen ILU communities, with a final report being presented to Sustainability Victoria in 2011.

This partnership with Sustainability Victoria has encouraged us to think about our long term property development strategies. Our Housing Team are committed to implementing sustainable improvements at our existing 224 Melbourne based housing options and researching and implementing sustainable living for all future property developments.

A handwritten signature in black ink, appearing to read 'Stephen McGarry'.

Stephen McGarry
General Manager Housing



An Independent Living Unit

Our Volunteers



‘Nobody can do everything but every body can do something’

Our amazing team of dedicated volunteers continue to be an integral part of UnitingCare Harrison. They are involved in a diverse and challenging range of activities and services at all levels of the organisation; Board of Governance, Op Shops, Young Peoples Resource Centre, Gifford Arts Program, Community Meals, Material Aid, Pat ‘n’ Chat, bread service and the Christmas Appeal.

This year we welcomed a new group of volunteers to assist with our Material Aid Program. These people have generously given up their time to assist with the distribution of food parcels and vouchers from our Knox office.

The Pat ‘n’ Chat program has continued to be warmly received by residents at Crawford Court, South Melbourne. Special thank you to our volunteer doggies and their owners for providing the opportunity for our residents to enjoy the company of a four legged friend.

Harrison is ever grateful for the contribution our volunteers make to our organisation and our mission. We formally celebrated our volunteers during National Volunteer Week in May and were delighted to be able to offer thank you hampers courtesy of Twinings Tea.

Nobody can do everything but everybody can do something to aid us in our mission. Please consider offering your time or skills to help us to assist people to take charge of their own lives.

Jane Davoren
Coordinator of Volunteers



Bayswater Op Shop

Years of Volunteering

| | | | | | |
|----------------------|----|---------------------|----|------------------------|----|
| Ailsa Coath | 20 | Helen MacGregor | 6 | Muriel & Aubrey Cupido | 16 |
| Aileen Dugdell | 4 | Hester Calderbank | 9 | Nancy Matthews | 5 |
| Alex Hume | 6 | Hwa Loh (Ong) | 1 | Neal Standfield | 13 |
| Alex Lyne | 16 | Iloni Maharage | 2 | Nola Michelsom | 4 |
| Alison Findlay | 13 | Jackie Jamison | 6 | Nola Peshut | 4 |
| Alyce Lintern | 1 | Jan Wood | 9 | Norma Logan | 11 |
| Alyson La ' Brooy | 1 | Janette Alesich | 12 | Pat Paxton | 10 |
| Andrew O' Meara | 1 | Janice Henderson | 1 | Pat Stemmer | 15 |
| Andrina Wilson | 1 | Janice Corben | 4 | Patricia Aarons | 1 |
| Ann Cornell | 10 | Janine Cheung | 2 | Patricia Arthur | 1 |
| Anna Mackow | 2 | Jay Reidy-Crofts | 13 | Paul Mance | 3 |
| Anna Owens | 1 | Jean Broadby | 11 | Peter Jamieson | 4 |
| Anne Fox | 1 | Jean Christoforou | 16 | Phillip Boaden | 10 |
| Anne Martin | 5 | Jeanette Bain | 16 | Rita Theodore | 2 |
| Anne Murray | 9 | Jenene Lancashire | 1 | Roma Webb | 13 |
| Anne Toby | 16 | Jill Greenard | 11 | Rose Daglish | 12 |
| Anne Van Der Leeuw | 10 | Joan Barker | 7 | Rosemaire Inwood | 6 |
| Audrey Wallace | 16 | Joan Cocks | 4 | Rosemary Jansz | 2 |
| Barb Laub | 15 | Joan Green | 6 | Rosemary Morrison | 3 |
| Barbara Kershaw | 6 | Joan Luke | 5 | Ross Corben | 3 |
| Barbara Seabrook | 2 | Joyce Billington | 2 | Ruth Hamilton | 16 |
| Barbara Wilson | 2 | Joyce Houston | 10 | Ruth Van Gramberg | 1 |
| Beryl Tate | 16 | Judy Irvine | 6 | Ruth Waters | 4 |
| Betty Grewcock | 8 | Judy Shirley | 11 | Sandra Keddie | 4 |
| Betty Matters | 13 | Julia Davey | 1 | Sandra Vivian | 7 |
| Betty & Frank Brook | 15 | June Carter | 7 | Sharyn Larmour | 2 |
| Bill Clarke | 2 | Karen Spiers | 15 | Sheila Buckle | 15 |
| Bill & Marilyn Jones | 15 | Kathryn Lyle | 1 | Shirley Cooling | 16 |
| Brooke Van Eerden | 3 | Kathryn Michie | 1 | Sia Feretopoulos | 11 |
| Brygyda Maiden | 1 | Kathy Nash | 13 | Stella Cox | 13 |
| Carol Pickering | 6 | Kaye Murphy | 3 | Stephen Massing | 1 |
| Carolyn Worth | 1 | Kim Halliday | 1 | Sue Glennen | 1 |
| Catharina Dwight | 1 | Lee Smith | 15 | Sue Jamieson | 1 |
| Christine Westley | 2 | Lesley Kent | 10 | Susan Mc Kenna | 1 |
| Colleen Wilhelm | 10 | Leslie Craig-Brown | 16 | Susan Purcell | 1 |
| Darrell Roach | 11 | Linda Gundry | 6 | Sylvia Marsh | 15 |
| Diane Shepperd | 2 | Lois Conboy | 7 | Sylvia O'Brien | 4 |
| Doreen Willson | 8 | Lola Payne | 2 | Teresa Balogh | 10 |
| Dorothy Perks | 16 | Lorraine Rozenboom | 4 | Teresa Duncan | 1 |
| Dorothy Sharples | 4 | Louise Jansen | 16 | Thelma Stone | 24 |
| Edna Lemke | 5 | Lyn Berry | 12 | Thelma Young | 11 |
| Edward (Ted) Parker | 2 | Maree Mason | 1 | Thereza Krammer | 8 |
| Eileen McPherson | 8 | Margaret Bail | 2 | Trevor King | 15 |
| Elaine Hewson | 9 | Margaret Hutson | 2 | Trish Tedeschi | 1 |
| Emmy Lauterbach | 6 | Margaret Huwley | 1 | Usha Narayan | 2 |
| Enid Miller | 13 | Margaret Jones | 4 | Val McCarthy | 16 |
| Ethel & Carl Davids | 6 | Marion Paul | 9 | Val Sheperd | 20 |
| Eve Marie Plowman | 1 | Marlene McHutchison | 1 | Valerie Day | 16 |
| Evelyn Street | 17 | Marlene Stephens | 16 | Venetia Groth | 2 |
| Evelyn Wookey | 1 | Matthew Haustorfer | 1 | Verona Cousin | 9 |
| Frances Duggan | 1 | Maureen Breuer | 2 | Weston Elvins | 11 |
| Frances Laurie | 5 | Meredith Jess | 1 | William (Bill) Mackay | 1 |
| Frances McMeekin | 16 | Merrilyn Sorensen | 1 | Yuksel Okur | 15 |
| Gladys Grigg | 5 | Michelle Trebilco | 9 | Yvonne Lowe | 6 |
| Grace Davis | 15 | Miriam (Mim) Grundy | 2 | | |
| Grace McKay | 22 | Moir Adam | 8 | | |
| Gwen Sheppard | 7 | Muriel Steel | 16 | | |

As at 30th June 2009

Continuous Improvement



‘Continuously improving the quality of our service delivery and the systems that support our mission’

UnitingCare Harrison is committed to continuous quality improvement. It is embraced as part of our every day work and is embedded in our annual planning, policies and procedures.

This year the agency has focused on:

- Equal Employment Opportunity training
- Quality work plans
- Lead Tenant support
- Student Placement program
- Legal compliance protocols
- Child car seat restraint training

We currently hold the following accreditations:

- QICSA – Quality Improvement Council (QIC) Standards & Accreditation
- HASS – Homelessness Assistance Service Standards

In 2009/10 the agency will work towards accreditation of the Disability Service Standards under JAS-ANZ and we will continue to review and promote the improvement of service delivery and the systems that support our mission.

A handwritten signature in black ink, appearing to read 'Sharon'.

Sharon Wolstenholme
Quality Manager



Jenny Tomlin (left) presented with HASS certificate by Minister for Housing, Richard Wynne MP

Supporters

UnitingCare Harrison thanks the following supporters for their generous contributions:

Australia for Christ Fellowship
Bakers Delight (Studfield)
Big W
Box Hill Institute of TAFE
Bunnings (Bayswater)
Channel 7
Chesterfield Farm
City of Whitehorse Community Chest
Crossways Baptist Church
Croydon Leisure & Aquatic Centre
Croydon North UnitingChurch
Cuckoo Restaurant
Dairy Bell Ice Cream
Emerald UnitingChurch
Epworth Hospital Employees
Essendon Football Club
Ferntree Gully UnitingChurch
Full mental Jacket
Grill'd (Knox)
Hairhouse Warehouse (Knox)
Hawthorn Football Club
Jarrah
Knit one give one (KOGO)
Knox City Council
Knox City Shopping Centre
Knox Tavern
Knox Youth Services
Knoxfield Primary School
Last Laugh at the Comedy Club
Maroondah City Council
Melbourne Knitters for the Needy
Melbourne Observation Deck – Rialto
Melbourne Sports & Aquatic Centre
Melbourne Storm
Melbourne Tigers
Mount Waverley UnitingChurch
OCE Australia
Office of the Public Advocate
Ovaltine
Puffing Billy Railway
Red Cross (Vermont)
Ringwood Aquatic Centre
Ringwood Golf Course
Roller City (Bayswater)
Share Community Appeal
Subway (Wantirna)
The Avenue UnitingChurch (Blackburn)
The Footman Club
The Salvation Army
Time Zone (Knox)
Twinings
Victorian Eastern Relief
York on Lilydale Resort

Balance Sheet

As at 30th June 2009

| | 2009 | 2008 |
|--------------------------------------|------------------|------------------|
| ASSETS | | |
| Current Assets | | |
| Cash and cash equivalents | 136,447 | 287,967 |
| Receivables | 202,635 | 442,040 |
| Investments | 565,469 | 899,017 |
| Other current assets | 607,133 | 47,055 |
| Total Current Assets | <u>1,511,684</u> | <u>1,676,079</u> |
| Non-current Assets | | |
| Available-for-sale investments | 1,868,561 | 2,230,910 |
| Property, plant and equipment | 6,505,250 | 3,208,049 |
| Total Non-current Assets | <u>8,373,811</u> | <u>5,438,959</u> |
| Total Assets | <u>9,885,495</u> | <u>7,115,038</u> |
| LIABILITIES | | |
| Current liabilities | | |
| Trade and other payables | 315,311 | 315,691 |
| Short-term provisions | 671,909 | 652,713 |
| Other current liabilities | 249,981 | 196,984 |
| Total Current Liabilities | <u>1,237,201</u> | <u>1,165,388</u> |
| Non-current Liabilities | | |
| Resident ingoings | | |
| Interest bearing liabilities | | |
| Long-term provisions | 45,720 | 71,629 |
| Other non-current liabilities | | |
| Total Non-current Liabilities | <u>45,720</u> | <u>71,629</u> |
| Total Liabilities | <u>1,282,921</u> | <u>1,237,017</u> |
| Net Assets | <u>8,602,574</u> | <u>5,878,021</u> |
| EQUITY | | |
| Accumulated funds | 7,923,925 | 4,731,056 |
| Asset revaluation reserve | 709,195 | 709,195 |
| Unrealised gains | (30,546) | 437,770 |
| Total Equity | <u>8,602,574</u> | <u>5,878,021</u> |

Making a Donation

Your generous support can help us to assist people to take charge of their own lives

\$10 Can buy a toiletry kit for families and young people living in crisis accommodation

\$20 Can buy art materials to support the Gifford Arts Program for people with a disability

\$25 Can supply emergency food to those in need

\$95 Can house a family for the night

Name

Address

State P/Code Phone

Email

Please Indicate

\$10 \$20 \$50 \$100 or

All Donations of \$2 or more are tax deductible. A receipt will be issued.

Payment Method

Cheque or Money Order—Please make payable to UnitingCare Harrison

Visa MasterCard Bankcard

Card number

Card expiry Cardholder signature

Please return to UnitingCare Harrison PO Box 4503 Knox City 3152

UnitingCare Harrison
1012 Little Burwood Highway
Wantirna South 3152
P.O. Box 4503 Knox City 3152

P: (03) 9871 8700
F: (03) 9801 3134
E: enquiries@harrison.org.au
www.unitingcareharrison.org.au

ABN: 61 737 393 012

“We assist people to take charge of their own lives”